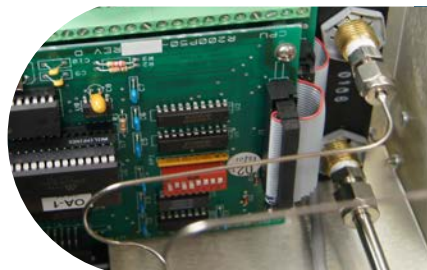


MODEL 7100

Trace oxygen analyzer Compact series/ high purity



Small. Stable. Reliable

- 0 to 1000 ppm measurement range
- Mini-zirconia oxide ZR-400 sensor
- $\pm 2.0\%$ accuracy
- Internal or remote sensor mounting with KF fitting option
- $T_{90} < 10$ seconds

Description

The Neutronics Model 7100 is a compact analyzer designed for trace oxygen gas measurement. This analyzer features a rapid-response mini-zirconia sensor with a measurement range of 0 to 1000 ppm oxygen. Extremely fast response, high accuracy, and no requirement for periodic calibrations make this analyzer a low-maintenance solution that delivers reliable performance for critical process control applications.

Compact modular design

The compact series analyzers are easy to install. With a small footprint, the analyzers are designed to be flush mounted onto the surface of a control panel and integrated into a wide variety of equipment components.

Reliable performance

The ZR-400 is a non-depleting limiting current type device based on a zirconia solid electrolyte sensor. With an integral heater and two electrodes, it is mounted directly onto a printed circuit board that supplies bias and heater voltages to the sensor element. A small capillary on the sensor surface controls diffusion of oxygen into the sensor. At operating temperature, oxygen is electrochemically reduced, causing current flow through the solid electrolyte. Oxygen concentration in the sample gas is determined by measuring the current flowing through the electrodes.

For the most accurate readings, the Model 7100 requires calibration at start-up using a flexible two-point calibration. During the normal service life of the sensor, no additional calibration is required.

Fast response sensor

The response time for the ZR-400 mini-zirconia oxygen sensor is 10 seconds. Accuracy is to within $\pm 2.0\%$ of the measurement range. Operating service life is 3 to 4 years, and it has an unlimited shelf life. It is not affected by position and can be exposed to high atmospheric pressures with no impact on performance. This robust sensor has low cross-sensitivity to other gases and is unaffected by dry atmospheres or extremely cold storage temperatures.

Internal or remote sensor mounting

The Model 7100 is available in two configurations – with the sensor mounted inside the analyzer housing in a flow-through chamber or with the sensor mounted externally and connected with a sensor interface cable. For remote mounting, the sensor is installed in a Stainless Steel housing with either a threaded connection for installation in a flow-through head or with a KF adapter fitting for installation designed for KF flange mounting.

Easy to operate

The Model 7100 is shipped ready to install and operate with the complete configuration already programmed and tested by the factory. Setup parameters may be changed by the user by accessing the setup menu by pressing the buttons on the keypad. All parameters may be changed by using the RS-232 service port interface.

Communication options

The user has a choice of options for communicating between the Model 7100 analyzer and the operating system controller. Two analog outputs are available: 4-20 mA and 0-1, 0-5, or 0-10 VDC. The RS-232 digital interface gives the user access to all settings including the option to restore the analyzer to its “out-of-box” or factory delivered settings.

Two adjustable alarms

Alarms with configurable relay outputs initiate active modes and light indicator LEDs based on user defined settings. The alarm status clears automatically when the measured oxygen concentration is within the set threshold value.

Auto or fixed range measurement

The Model 7100 can be configured to automatically change the measurement range based on the concentration of oxygen in the process. System control devices require a continuous indication of the analyzer's selected range for accurate scaling. The Model 7100 analyzer features a 0-10 VDC auto-range identification output. Used in conjunction with the analog voltage and analog current outputs when auto-ranging is used, the auto-range ID provides an indication of the analog outputs' selected full-scale.



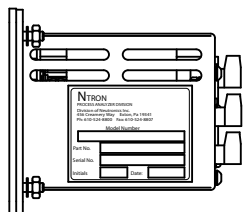
MODEL 7100

Trace oxygen analyzer

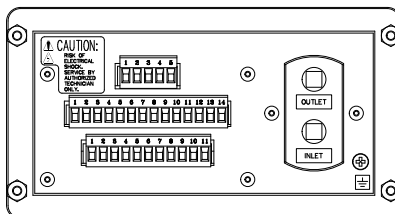
Specifications

| | |
|---------------------------------|--|
| Type | Trace oxygen analyzer |
| Operating range | 0-100 ppm, 0-1000 ppm, auto |
| Sensor | Mini-zirconia, ZR-400 |
| Accuracy | ± 2.0% of range @ calibrated temperature and pressure or ± 3 ppm |
| Response time | T ₉₀ < 10 seconds |
| Warm up time | 60 seconds |
| Sensor expected service life | 3 - 4 years |
| Relative humidity (analyzer) | 0 - 95% non-condensing |
| Operating temperature | 0° - 50° C (32° - 122° F) |
| Sample pressure | 15inHg vacuum to 7 psig (0.5 to 1.5 bar) |
| Display | 7-segment, 0.75" alphanumeric LED, 4 characters LEDs for system status: run, fault, alarm-1, alarm-2 |
| Power supply | 90 - 264 VAC or 24 VDC |
| Analog current output | 4 - 20 mA, 12 VDC, powered by the analyzer |
| Analog voltage output | 0-1, 0-5, 0-10 VDC |
| Relay outputs | Two alarm relays, field adjustable Form C (SPDT) One system fault relay, non-adjustable Form B (SPST) |
| Serial service port | RS-232 |
| Control panel rating | Weatherproof NEMA 4, IP66 |
| Rear electronics chassis rating | NEMA 1, IP20 |
| Warranty | Analyzer: 12 months, sensor: 6 months |
| Analyzer dimensions (LxWxH) | 7.00" (117.80mm) x 4.125" (104.78mm) x 3.75" (95.25mm) |
| External sensor dimensions | 1.5" diameter x 3.25" long (NEMA 1, IP20) |
| Weight | 3 lbs (1.4 kg) |

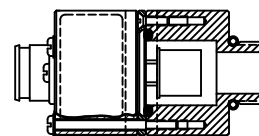
Specifications are subject to change without notice.



Analyzer side view



Internal sensor



Remote sensor

Order information

| Part | Part number |
|---|-----------------|
| 7100B-N1, 90-264 VAC, with internal sensor | C7-01-7100-05-0 |
| 7100BE-N1, 90-264 VAC, with remote mounted sensor | C7-01-7100-06-X |
| 7100B-N1-CV, 90-264 VAC, with internal sensor and check valve | C7-01-7100-07-0 |
| 7124B-N1, 24 VDC, with internal sensor | C7-01-7124-05-0 |
| 7124BE-N1, 24 VDC, with remote mounted sensor | C7-01-7124-06-X |



Bacharach
Gas Analysis Solutions
 456 Creamery Way
 Exton, PA 19341
 Tel: 610.524.8800
 www.mybacharach.com