

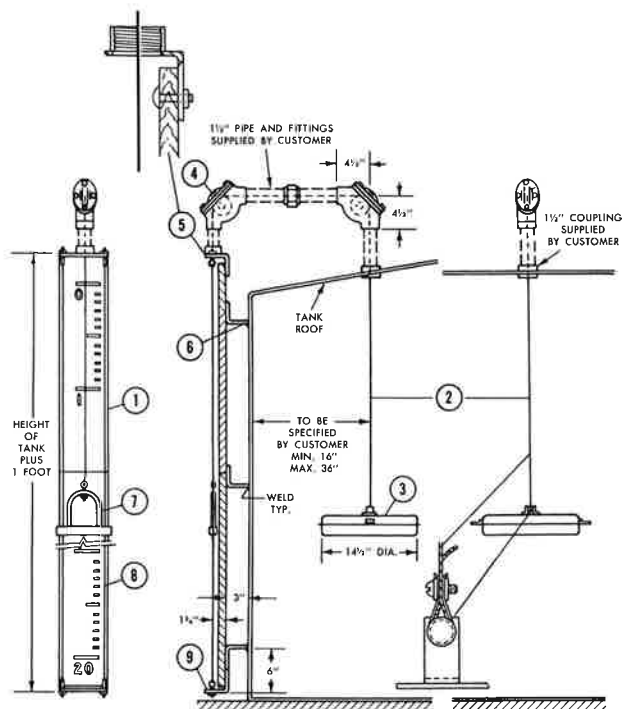
PROTECTOSEAL SERIES No. 40000

ITEM	PART NO.	DESCRIPTION	MATERIAL	REQ.
1	41000-320	Board	Aluminum	*
2	41000-190	Cable, Float	Stainless Steel, Type 316	*
3	41000-225	Float Assembly	Stainless Steel, Type 316	1
4	42000-275	Sheave Assembly	Aluminum Housing, 18/8 Wheel, TFE Bearing	2
5	41000-155	Top Board Connector	Steel	1
6	41000-135	Board Bracket	Steel	*
7	41000-185	Indicator Assembly	Steel	1
8	41000-120	Guide Wire, Indicator	Steel Galvanized	*
9	41000-145	Bottom Bracket Assembly	Steel	1

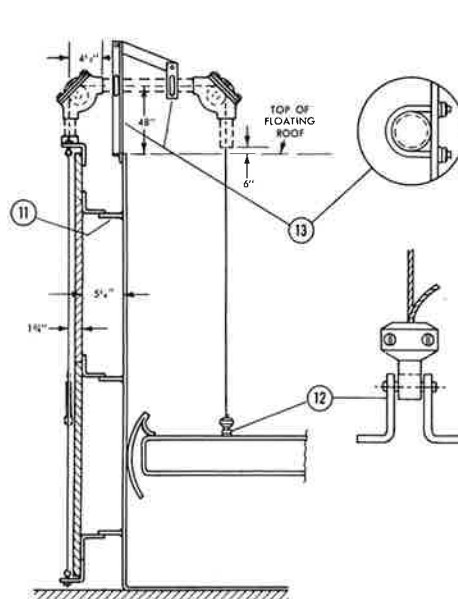
40000A includes items 2, 3, 4, 5, 7, 8 and 9

Various Applications of Liquid Level Indicators

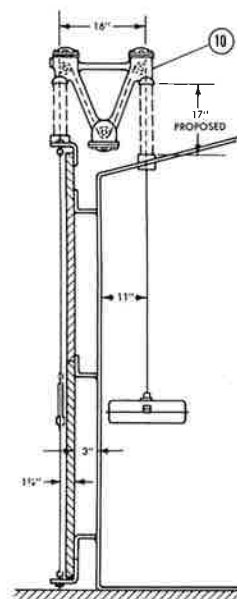
PROTECTOSEAL SERIES No. 40000



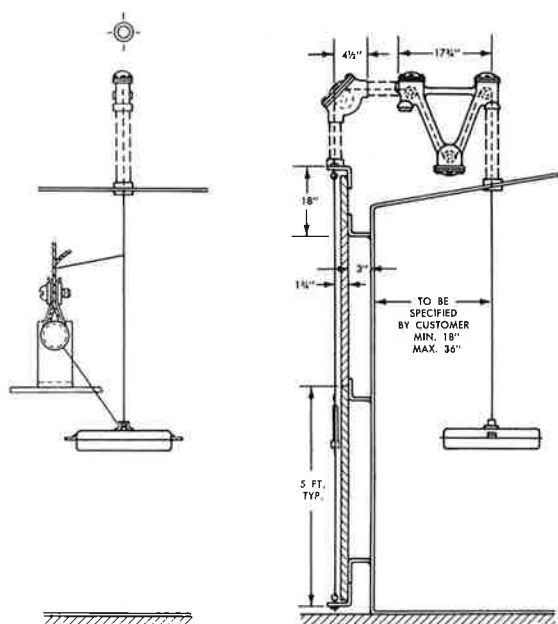
CAT. NO. 40000 AND 40000A
CONE OR FLAT ROOF TANK (UNGUIDED FLOAT)



CAT. NO. 40100
FLOATING ROOF TANK
(WITHOUT FLOAT WELL)



CAT. NO. 40200 AND 40200A
CONE OR FLAT ROOF TANK
WITH LIQUID SEAL
(UNGUIDED FLOAT)



CAT. NO. 40500 AND 40500A
CONE OR FLAT ROOF TANK
WITH LIQUID SEAL
(UNGUIDED FLOAT)

ITEM	PART NO.	DESCRIPTION	MATERIAL	REQUIRED			
				40000	40100	40200	40500
1	41000-320	Board	Aluminum	*	*	*	*
2	41000-190	Cable, Float	Stainless Steel, Type 316	*	*	*	*
3	41000-225	Float Assembly	Stainless Steel, Type 316	1	—	1	1
4	42000-275	Sheave Assembly	Aluminum Housing, 18/8 Wheel, TFE Bearing	2	2	—	1
5	41000-155	Top Board Connector	Steel	1	1	1	1
6	41000-135	Board Bracket	Steel	*	*	*	*
7	41000-185	Indicator Assembly	Steel	1	1	1	1
8	41000-120	Guide Wire, Indicator	Steel Galvanized	*	*	*	*
9	41000-145	Bottom Bracket Assembly	Steel	1	1	1	1
10	41200-175	Liquid Seal Assembly	Aluminum Housing, 18/8 Wheel, TFE Bearings	—	—	1	1
11	43000-165	Tank Bracket	Steel	—	*	—	—
12	41000-230	Cable Attachment	Stainless Steel, Type 316	—	1	—	—
13	43000-150	Pipe Bracket	Steel	—	1	—	—

*Depends upon tank height.

40000 includes items 1-9

40000A includes items 2, 3, 4, 5, 7, 8, and 9

The Protectoseal Company