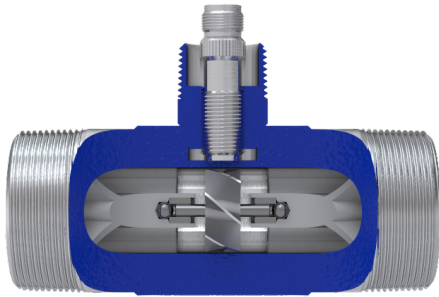


TM Liquid In-Line Turbine Flow Meter

ACCURATE AND RELIABLE LIQUID FLOW MEASUREMENT



Turbines, Inc. is the leader in the design and manufacture of reliable and accurate turbine flow metering equipment, electronic monitors, and accessories. All products are engineered, manufactured, and calibrated using premium quality materials by skilled tradesman with state-of-the-art equipment.

Turbines, Inc. maintains a team of dedicated engineers, technicians, and application specialists, who are on-call to assist with product/application guidance, technical assistance, and special configurations or modifications.

Specifications	
Performance	
Linearity	+/- 1% over flow range*
Repeatability	+/- 0.1% over flow range
Operating Temperature	-100°F to +300°F Standard (850°F with special coil)
Materials	
Meter Body	316 Stainless steel
Rotor Supports	316 Stainless steel
Meter Rotor	CD4MCu/416 Stainless steel
Rotor Shaft	Tungsten carbide
Sleeve Bearings	Tungsten carbide
Additional Information	Full line of Retrofit Kits are available Factory refurbishment is available
Connections	NPT, grooved, or flanged (consult factory for other options)
Certifications	CRN Certified, ISO 9001, NIST traceable calibration



Turbines Part Number	End Connection Size (in)	Flow Range (GPM)	Flow Range (BPD)	Flow Range (M3PD)	Flow Range (LPM)	Max Pressure (PSI)	Repair Kits (Kits come with: 2-Rotor Supports, 1-Rotor, & 2-Retaining Rings)
TM0038	1" X 1" Male NPT	0.3 -3	10 - 100	1.6 -16	1.14 - 11.36	5,000	TK0038
TM0038X 1/2	½" X ½" Male NPT						
TM0050	1" X 1" Male NPT	0.75 -7.5	25 -250	4-40	2.84-28.39	5,000	TK0050
TM0050X 1/2	½" X ½" Male NPT						
TM0075	1" X 1" Male NPT	2 -15	68 - 514	11 -80	7.57 - 56.78	5,000	TK0075
TM0075X 1/2	½" X ½" Male NPT						
TM0078	1" X 1" Male NPT	3 -30	102 - 1,028	16 -160	11.36 - 113.6	5,000	TK0078
TM0078-VIC	1" X 1" Grooved					1,000	
TM0100	1" X 1" Male NPT	5-50	170 -1,714	27 - 270	18.93 - 189.93	5,000	TK0100
TM0100-VIC	1" X 1" Grooved					1,000	
TM0150	1½" X 1½" Male NPT	15 -180	514 - 6,000	80 -980	56.8 - 681.35	5,000	TK0150
TM0150-VIC	1½" X 1½" Grooved					1,000	
TM0200L	2" X 2" Low Flow Male NPT	15 -180	514 - 6,000	80 -980	56.8- 681.35	5,000	TK0150
TM200L-VIC	2" X 2" Low Flow Grooved					1,000	
TM0200	2" X 2" Female NPT	40-400	1,371 - 13,714	218 - 2,180	151 - 1,514	5,000	TK0200
TM0200-VIC	2 ½" X 2 ½" Grooved					1,000	
TM0300	3" Grooved	60 -600	2,100- 21,000	320 - 3,200	227 - 2,270	1,000	TK0300
TM0400	4" Grooved	120-1,200	4,100- 41,000	654 - 6,541	454 - 4,542	800	TK0400
TM0600	6" Grooved	250 -2,500	8571- 85,710	1,362 - 13,627	946 - 9,463	800	TK0600
TM0800	8" Grooved	350 -3,500	12,000-120,000	1,907- 19,080	1,324 - 13,248	800	TK0800
TM1000	10" Grooved	550 -5,500	19,000-190,000	2,998 - 29,980	2,081 - 20,819	800	TK1000

Magnetic pick up is standard on all models (no extra charge). *Except TM0038 which is +/- 2.0%

Service

Our dedicated staff offers complete support and recertification for flow meters — whether our own or a competitor's brand. Our calibration services are performed by our trained technicians using the latest testing equipment.

Turbines, Inc. maintains extensive inventories in multiple locations to facilitate rapid, industry leading deliveries.

Worldwide Support

We serve customers globally with offices in Altus, OK; Seneca, SC; Odessa, TX; Cranston, RI; and Edmonton, Alberta, Canada.



Turbines, Inc. products are proudly made in the U.S.A.



15935 Highway 283 N.
Altus, Oklahoma 73522, USA
Tel: +1-580-477-3067
www.turbinesincorporated.com



112 Lumber Ln.
Seneca, SC 29672 USA
Tel: +1-864-882-4544
www.turbinesincorporated.com



960 South Meadow Ave.
Odessa, TX 79761 USA
Tel: +1-432-333-4800
www.turbinesodessa.com



800 Wellington Avenue
Cranston, RI 02910, USA
Tel: +1-401-461-6366
www.primaryflowsignal.com



2236 80th Avenue NW,
Edmonton, AB T6P 1N2
Tel: 877-661-3569
www.pfscanada.com