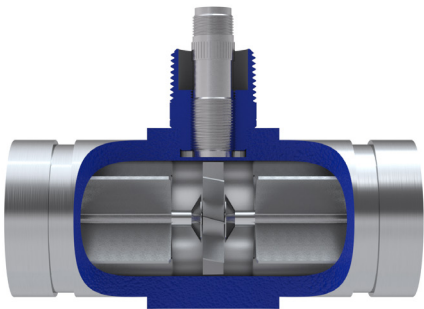


# TMG Series Gas Flow Meter

**ACCURATE AND RELIABLE GAS  
FLOW MEASUREMENT**



**Turbines, Inc.** is the leader in the design and manufacture of reliable and accurate turbine flow metering equipment, electronic monitors, and accessories. All products are engineered, manufactured, and calibrated using premium quality materials by skilled tradesman with state-of-the-art equipment.

Turbines, Inc. maintains a team of dedicated engineers, technicians, and application specialists, who are on-call to assist with product/application guidance, technical assistance, and special configurations or modifications.

Specifications	
<b>Performance</b>	
Linearity	+/- 1.0% (density dependent)
Repeatability	+/- 0.1% over flow range
Operating Temperature	-450°F to +450°F (850°F with special coil)
Flow Rate	0.5 to 12,000 ACFM
<b>Materials</b>	
Meter Body	316 Stainless steel (consult factory for other options)
Rotor	17-4PH Stainless steel (consult factory for other options)
Bearings	440C Stainless steel ball bearings with self-lubricating retainer
<b>Additional Information</b>	
Full line of economical Retrofit Kits are available	
Connections	Grooved, NPT, flanged, or wafer (consult factory for other options)
<b>Certifications</b>	
CRN Certified, ISO 9001, NIST traceable calibration	



## Details

1. Magnetic pickup coils included with each turbine meter at no extra charge.
2. The TMG Series is linear and accurate over its designed operating range.

The TMG Series can be complemented with any of our monitors or interface modules to comprise a comprehensive system.



Model	Size	Retrofit Kit Model	Range (ACFM)
TMG0100L	1"	TMGK0100L	0.5 – 20
TMG0100	1"	TMGK0100	3 – 30
TMG0100H	1"	TMGK0100H	4 – 60
TMG0200L	2"	TMGK0200L	2 – 90
TMG0200	2"	TMGK0200	15 – 250
TMG0300	3"	TMGK0300	40-650
TMG0400	4"	TMGK0400	75-1250
TMG0600	6"	TMGK0600	250-2900
TMG0800	8"	TMGK0800	330-5000
TMG1000	10"	TMGK1000	650-7500
TMG1200	12"	TMGK1200	900-12000

## Service

Our dedicated staff offers complete support and recertification for flow meters — whether our own or a competitor's brand. Our calibration services are performed by our trained technicians using the latest testing equipment.

Turbines, Inc. maintains extensive inventories in multiple locations to facilitate rapid, industry leading deliveries.

## Worldwide Support

We serve customers globally with offices in Altus, OK; Seneca, SC; Odessa, TX; Cranston, RI; and Edmonton, Alberta, Canada.

 All Turbines, Inc. products are proudly made in the U.S.A.



15935 Highway 283 N.  
Altus, Oklahoma 73522, USA  
Tel: +1-580-477-3067  
[www.turbinesincorporated.com](http://www.turbinesincorporated.com)



A wholly Owned Subsidiary of Turbines, Inc. Altus, OK, USA

112 Lumber Ln.  
Seneca, SC 29672 USA  
Tel: +1-864-882-4544  
[www.turbinesincorporated.com](http://www.turbinesincorporated.com)



960 South Meadow Ave.  
Odessa, TX 79761 USA  
Tel: +1-432-333-4800  
[www.turbinesodessa.com](http://www.turbinesodessa.com)



800 Wellington Avenue  
Cranston, RI 02910, USA  
Tel: +1-401-461-6366  
[www.primaryflowsignal.com](http://www.primaryflowsignal.com)



2236 80th Avenue NW,  
Edmonton, AB T6P 1N2  
Tel: 877-661-3569  
[www.pfscanada.com](http://www.pfscanada.com)